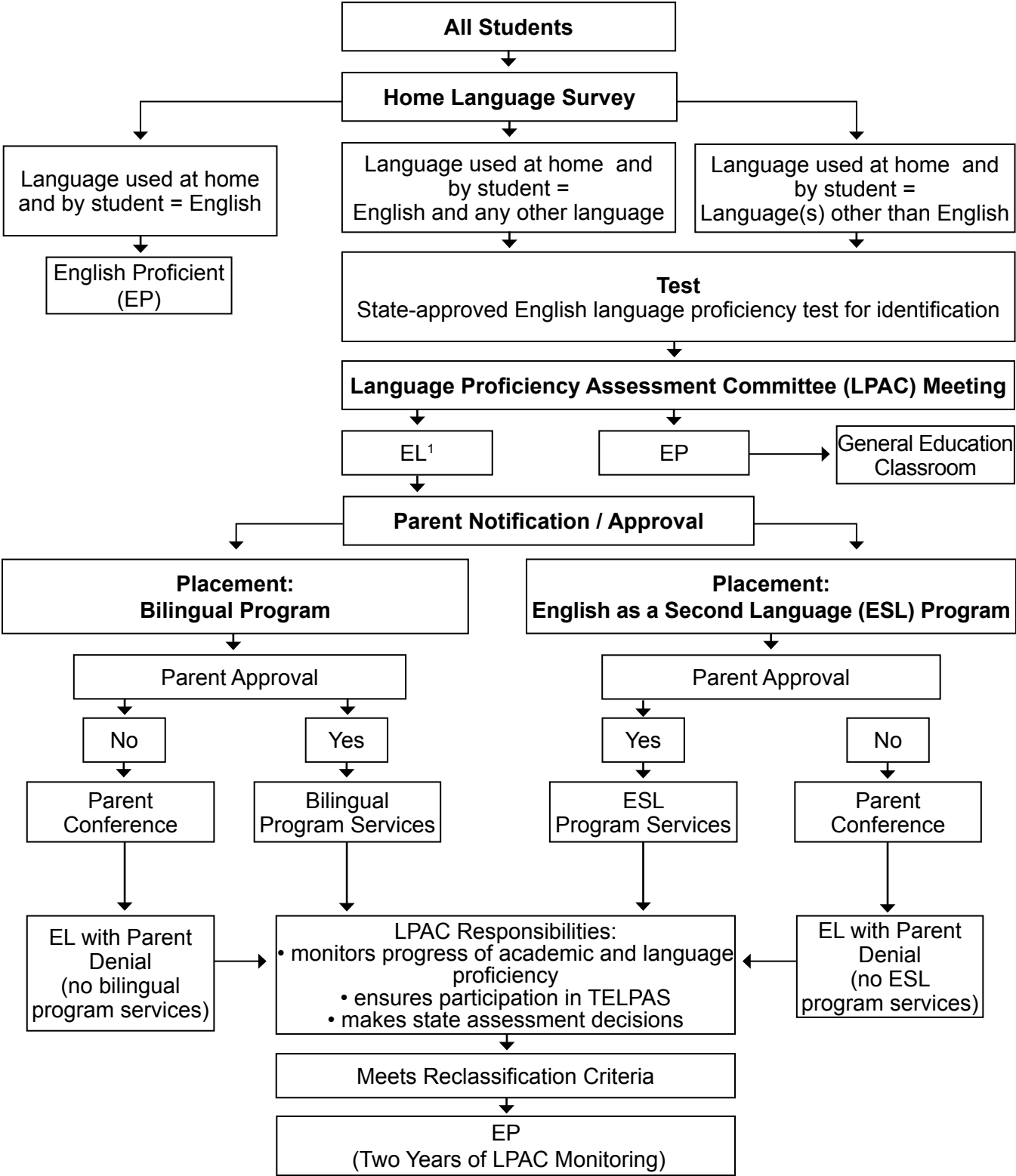


# English Learner (EL) Identification/Reclassification Flowchart



<sup>1</sup>Criteria for EL identification:

**Pre-K – 1st:** State-approved English language proficiency test (listening and speaking) below English proficient level = EL

**2nd – 12th:** State-approved English language proficiency test (listening, speaking, reading, and writing) below English proficient level = EL

The terms Limited English Proficient (LEP) and English learner (EL) are used interchangeably. The term LEP is still used for data collection in the Public Education Information Management Systems (PEIMS).